

# CABLE RELEASE

## SILVER SPRING CAMERA CLUB

FOUNDED 1950 January 2015 Volume 56 Number 5

[SSCCPHOTOGRAPHY.ORG](http://SSCCPHOTOGRAPHY.ORG)

DECEMBER COMPETITION  
WINNERS  
WORDS & IMAGES



## SSCC Officers and Chairs 2014-2015

President:	Ron Freudenheim
Vice President:	Beth Echols
Treasurer:	Bruce Schaefer
Secretary:	Ted Ringger
Directors:	Mike Lux Michael Koren
Competition Chair:	Doug Wolters
Program Chair:	Coco Simon
Education Chair:	Michael Koren
Membership Chair:	Laurel Sharf
Field Trip Chair:	Pepe Izursa
Open Forum Moderator:	Dave Powell
Historian:	Norm Bernache
PSA Rep:	Loretta Argrett
Newsletter Editor:	Patrick Stuart
Webmaster:	Dan Sisken

E-mail addresses for officers are available on request. Please contact Ted Ringger at [tedringger@comcast.net](mailto:tedringger@comcast.net).

Visitors and prospective members are welcome. Membership is open to all persons interested in photography. For more information, contact Laurel Sharf at [Lsharf@verizon.net](mailto:Lsharf@verizon.net).

The *Cable Release* is published nine times each year, September through May, for members of the Silver Spring Camera Club. Articles are written by members of SSCC, which is a community-based organization dedicated to the advancement and enjoyment of photography.

SSCC member submissions for the *Cable Release* should be directed to Editor, *Cable Release*, at [pstu1219@gmail.com](mailto:pstu1219@gmail.com). More information is available in the SSCC Member Handbook: [www.scccphotography.org](http://www.scccphotography.org)

The Silver Spring Camera Club has been a member Club of the PSA since the club was founded in 1950. For information regarding the benefits of a PSA individual membership and for

PSA sponsored activities, please contact our Club PSA Representative, Loretta Argrett.



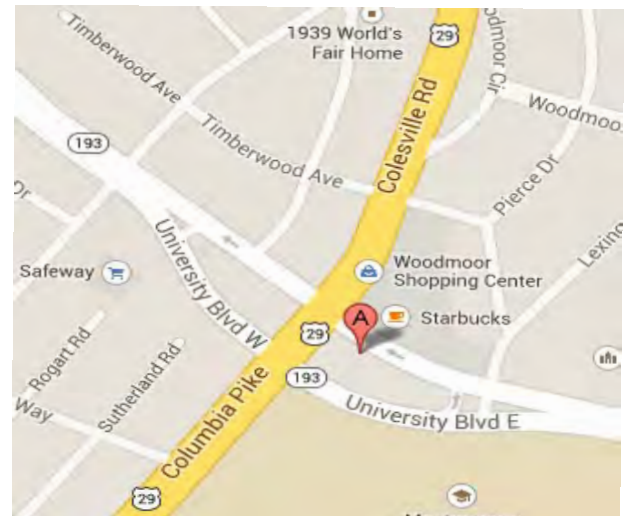
## ISSUE CONTENTS

- 3 This Month at SSCC**
- 4 Judge and Speaker Bios**
- 6 Member News**
- 8 Field Trips**
- 9 Kernels of Koren**
- 11 Words & Images**
- 18 Competition Winners**
- 23 Classes and Workshops**
- 24 Calls for Entry and Current Exhibits**

## SSCC MEETING LOCATION

All FOUR major monthly meetings of the Club Year are held at the Silver Spring United Methodist Church at Four Corners in Silver Spring.

*Note:* The main parking lot is accessed from the eastbound side of University Blvd, and you cannot make a left from southbound Colesville Rd. onto University Blvd. If you are coming from College Park/Takoma Park: Go west on University Blvd. Cross the Rte. 29/Colesville Rd intersection and turn left at the loop just past McDonalds. Go back east on University Blvd., cross Rte. 29 and turn left into church parking lot A. If you are coming from points north of Four Corners: Proceed south on Rte. 29 and turn right onto University Blvd., move into the far left lane and turn left at the loop just past the McDonalds. Go east on University Blvd., cross Rte. 29, and turn left into the church parking lot.



SSCC Meeting Location:  
Silver Spring United Methodist Church

## JANUARY AT THE SSCC

- 8 Speaker Night (7:30 p.m.)
- 15 Competition Night: Open (7:30 p.m.)
- 22 Education Night (7:30 p.m.)
- 29 Open Forum (7:30 p.m.)
- 31 Field Trip - National Zoo (10:00 a.m.)

## JANUARY OPEN FORUM NIGHT

In addition to our usual features - book reviews, gallery reviews, and a general discussion of topics of interest - there will be an intro to combining flash and ambient light. The "use of straight lines" is the organizing principle for the photos members will bring in for discussion and review.

## COMPETITIONS 2014-2015

DOUG WOLTERS, COMPETITION CHAIR

September - Open

October - Nature

November - Open

December - Patterns

### January - Open

February - Architectural Elements

March - Open

April - Black and White / Monochrome

May - Abstract

For further information on each competition topic and competition rules, please consult the *Members Handbook* at [www.scccphotography.org](http://www.scccphotography.org). For further questions, please contact Doug Wolters at [SSCCcompetitions@aol.com](mailto:SSCCcompetitions@aol.com).

© 2014 Silver Spring Camera Club and its contributors. All contents of the Cable Release are copyright protected. No material herein may be reproduced in any manner without the written permission of the Editor, Author, or Photographer.

## EDUCATION NIGHT - JANUARY Travel Photography

If you want to take unforgettable photos on your next vacation to share with family and friends then attend this Education Night. Get an overview of photographic techniques and processes for capturing and sharing memorable images while on vacation or traveling away from home.

## SSCC BOARD MEETING

The SSCC Board of Directors will have its next meeting at 7 p.m. on Tuesday, January 13, 2015 at the home of Coco Simon and Doug Wolters. All SSCC Members are welcome to attend. For those who may need directions, please contact Ron Freudenheim ([rlf@freudenheimgraves.com](mailto:rlf@freudenheimgraves.com)). An agenda will be sent to Board Members prior to the meeting. If you have an item you would like to include, please let Ron know.

**PROJECTED  
ENTRIES  
DUE JANUARY 8  
BY MIDNIGHT**

## COMPETITION COLUMN

### Doug Wolters, Competition Chair

January is an open-topic competition. Prepare for February! February's topic is Architectural Elements. Here's the definition:

#### Architectural Elements

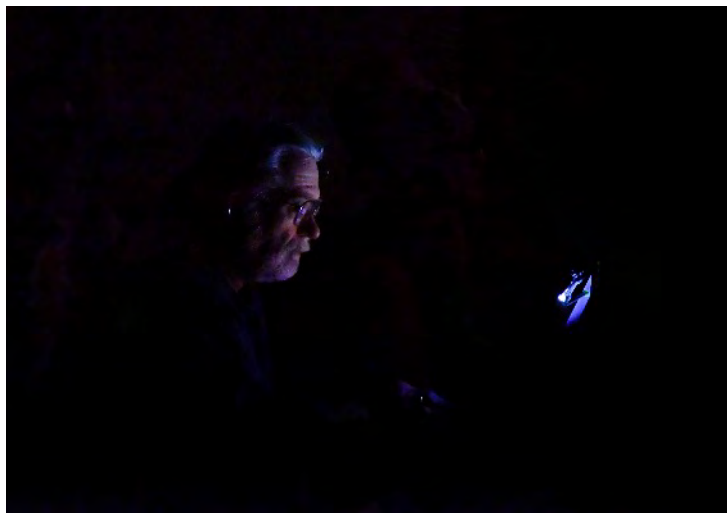
*This competition focuses on exterior and interior components of buildings and not on the totality of a building. For example, instead of portraying the entire façade of a magnificent old bank building, focus instead on the sculptural detail of the column capitals.*

*Architectural elements could include doorways and windows, steeples and domes, vaults and arches, brickwork and tile, railings and door handles, stairs, carvings, decorative wood trim, paving materials, and so on. Architectural elements for this competition do not include furniture or furnishings or any removable items not integral to the building.*

You could show architectural elements in a straightforward, narrative way, or you could find building components that turn into abstracts. You don't have to go far to find a tremendous wealth of possibilities, historic and contemporary. Just take the Metro downtown!

Themed competitions are a great way to expand one's "photographic" vocabulary.

Happy shooting!



## OPEN COMPETITION

### JUDGED BY SANDI CROAN

Sandi Croan is known not only as a fine photographer and recipient of many awards but also as a judge much in demand by local area camera clubs. Her web site ([www.sandicroanphotography.com](http://www.sandicroanphotography.com)) displays the breadth of her artistry and shows why she enjoys judging open-topic competitions.

Sandi has always looked at the world through the lens of a camera. She's been taking photographs for family, friends, and her own gallery since her first "Brownie" camera. Over the past 15 years, she's gotten much more serious about portrait, landscape, nature, and travel



photography. Now, she devotes herself full-time to her photographic passion and constantly strives to capture that special moment in time.

For her fine art photographs, Sandi has won numerous competitions and awards. Most recently, she was awarded the top honors for landscape in the Nature Visions Photography Expo as well as the People's Choice Award in the nature competition. In 2008 she was honored with both Best of Show and Second Place at the Meadowlark Nature Photography Expo and has had multiple images juried into Nature Visions Photography Expo annually. She has also won many awards and honors through the Northern Virginia Photographic Society. Elan Magazine ran a feature profile on Sandi, and her photograph "Blue Lagoon" was published on the cover. She has also had photographs published in other local and national magazines.

Sandi has been juried into many exhibitions and has sold many of her photographs to private, corporate, and government clients. In addition,

she has recently/or currently is displaying her art at several galleries and exhibit spaces, including Broadway Gallery in Alexandria, VA.

In addition to her fine art photography, Sandi is an outdoor portrait photographer specializing in children at play in natural settings and portfolio/marketing photos for models, actors, and teen pageant competitors. She captures the essence, personality, and beauty of all of her clients.

Since 2004, Sandi has been an active member of the Northern Virginia Photographic Society (NVPS) and has held a variety of board positions. She served as President of NVPS for two terms from 2009-2011.

In her non-photographic professional life, Sandi has been a registered physical therapist, director of personnel and administration at a social science consulting firm, and president and co-founder of a personnel staffing agency.



## **“RUST & RUIN” DON ROSENBERGER SPEAKS ON BUILDINGS IN DECAY**

Many SSCC members have visited the Eastern State Penitentiary or the Lonaconing Silk Mill. And lots of us have a fascination with the architecture of decay. Our speaker this month, Don Rosenberger, takes us on a virtual tour of structures well past their prime.

Don has a long and unusual photographic background. In 1983, he sold all his camera gear and walked away from photography. (Maybe he'll tell us why!) Then, in 2005, he found another camera and has spent most of his weekends and vacation time since then trying to make up for those years away.

Since his return to photography, Don has worked with and been mentored by a great group of well known - and some not so well known - photographers. Today, he is driven by the passion and urge always to create something better and to take his work up to the next level. Don is drawn to a variety of subjects but considers landscape photography to be the core of his work. Spending a great deal of time outside - often in remote locations - gives him an appreciation for our natural world. It's Don's hope that his images bring others that same feeling.

What about equipment? Don shoots with everything from the iPhone to high-end DSLRs and infrared. However, he emphasizes, it's not the camera that's important; that's just a tool of the photographer's vision.

Don is the former presentation manager for the Nature Visions Photography Expo. He's also a partner in Road Runner Photography Tours, leading national and international photography travel adventures.



## MEMBER NEWS

### MEMBER ACCEPTED INTO NATIONAL EXHIBIT

Three images by Doug Wolters were juried into the exhibit "Cosmos: Imagining the Universe" at the Annmarie Sculpture Garden and Arts Center in Solomon's Island, in association with the Smithsonian Institution. This is a "national juried exhibit, open to all media, small to large scale installations," which "invites artists to envision the mysteries of the universe, both scientific and fantastical . . ." The images accepted are included in Doug's "words and images" in this month's CR. The exhibit opens on February 13 and runs until July 26, 2015. The address is 13480 Dowell Rd, Dowell, MD; the web site is [www.annmariegarden.org](http://www.annmariegarden.org); and the telephone number is 410-326-4640.

### SSCC ABSTRACTS EXHIBIT GUIDELINES - APRIL 2014

#### ELIGIBILITY

- All SSCC members in good standing, including novices and advanced members.

#### EXHIBIT PARAMETERS

- Thirty-two images will be in the exhibit.
- An outside judge will select the images.
- Selection of winners will be announced at the end of February.
- Requirements for preparing images for exhibition will be provided.
- Christ Congregational Church will host an artists' reception.
- Publicity will be sent to local media.
- Christ Congregational Church does not take a percentage on images sold; however, gifts to the church are welcome.

#### NUMBER OF ENTRIES

- Members may submit up to three (3) images to be considered for the exhibit.

#### ENTRY REQUIREMENTS

- Entries must originate as photographs (See Competition Rules for a more comprehensive definition).
- All photographic techniques are permissible with the exception of photo collages or mixed media.
- Work from any year may be entered.
- Images must be the original work of the member.
- Images may be manipulated either in camera or in post-processing.

**Inclement Weather Policy**  
If Montgomery County schools close,  
SSCC is closed.  
For up-to-the-minute information  
go to [www.montgomeryschoolsmd.org](http://www.montgomeryschoolsmd.org)



## SUBMISSION

- Entries follow the same sizing conventions used for SSCC competitions: jpgs of a maximum of 1024 pixels on the longest side (See the *Cable Release* or the *Member Handbook* for details.)
- No border, watermark, copyright, or other embedded information.
- Naming conventions as follows:
  - Abstracts ~ Your Name ~ Image Title
- Submit images by email to:  
[SSCCcompetitions@aol.com](mailto:SSCCcompetitions@aol.com)

## DEADLINE

- All images must be emailed no later than Thursday, 5 February 2015.

## ENTRY FEE

- To cover the costs of the exhibit, entrants are required to pay a fee of \$10 to submit up to three (3) images. The fee must be paid by

check. The fee may be paid at an SSCC meeting or mailed to:

SSCC Abstracts Competition  
c/o Doug Wolters  
9218 Manchester Road  
Silver Spring, MD 20901

- The fee must be received no later than the deadline for submitting entries: **February 5, 2015**. Payment in advance of this deadline is strongly encouraged!

## FOR ADDITIONAL INFORMATION

- Please contact the SSCC curator of the exhibit, Coco Simon, by email:  
[SSCCcompetitions@aol.com](mailto:SSCCcompetitions@aol.com).



Coco Simon

# SSCC FIELD TRIPS

## FIELD TRIP TO NATIONAL ZOO January 31, 2015

The first SSCC-sponsored trip for 2015 will be on January 31 to the National Zoo. While the zoo opens at 6:00 a.m., the exhibit buildings don't open until 10:00 a.m. Beach Drive is closed on the weekends so take Connecticut Ave. If you want to carpool, meet at the Giant Supermarket parking lot at Arliss and Flower in Silver Spring at 10:00 a.m. If you want to drive yourself meet in Parking Lot C, see the map below and let Bob Peters know ([bob.peters6@verizon.net](mailto:bob.peters6@verizon.net)).

There is a map which makes a very legible 8.5 x 11 print at:  
<http://nationalzoo.si.edu/Visit/zoomap.pdf>



and an App for both Android and iOS which gives directions to the different areas using GPS is available at:

<http://nationalzoo.si.edu/smithsoniannationalzooapp/>

(Caveat Emptor: The App costs \$1.99 and has received mixed reviews.)

There will be a lot of walking and the zoo is on a fairly steep hill. Dress warmly. You may want to bring a spare battery. Keep it in an inside pocket to keep it warm as battery capacity goes down with decreasing temperature. There are four places to buy lunch in the zoo.

This is a great opportunity to test that new telephoto lens you just got. Carpoolers should exchange cell phone numbers with the driver to coordinate the return trip.



## KERNELS OF KOREN



Okay, something a little different. Over the summer I bought a pack of Solar Print paper in the gift shop of the NRAO in Green Bank, WV. It's designed for kids to experiment with making photograms using objects placed on the paper and then exposed to sunlight. This is similar to the process Man Ray used creating his Rayographs. I thought this would be fun to experiment with myself but I wanted to take it a step further.

My idea was to make a photogram of a photograph. The lead picture was chosen for its Parisian connection as the location of the invention of photography and the graphic yet "old world" qualities of the image. I shot the picture using my iPhone but I wasn't in Paris! I shot it in Florida. At Disney. In Epcot's France world showcase. Through a model 8x10 view camera. Pointed at a fake Louvre and Eiffel Tower. Snapseed for conversion to monochrome, a frame and a boost to contrast.

Here is the image after processing:



First I sized the image on the computer monitor and taped the unexposed Sun Paper to the screen. I was hoping the light from the monitor would expose the paper. Hours later, nothing!! No exposure at all, just a blank piece of paper.

Next attempt I printed the picture, taped the unexposed paper to the surface of the print and set it on a lightbox. I checked the paper every 10 minutes, then 20 minutes and then every hour for 5 hours. Still nothing!! I was thinking I bought a dud pack of paper so I decided to read the directions and check the internet for suggestions.

Turns out the paper is only sensitive to the UV light of SUNLIGHT, not monitor light or lightbox light but SUNLIGHT.

So, I taped a new piece of unexposed Sun Paper to the print and set it outside in direct sunlight. Voila, 15 minutes later there was a latent image on the Sun Paper. Next step is to wash the paper in water for about 5 minutes to dissolve the unexposed blue UV sensitive molecules leaving the white base of the paper. The water also oxidizes the remaining sensitized blue molecules and turns them a deeper blue. What I was left with is an image that looks like a cyanotype that was taken with an ancient view camera in the late 19th century.

I like the look and decided to try another image that had strong graphic qualities and would benefit from the soft focus look.

Here's an image taken with the iPhone and processed with Snapseed before the Sun Print process.



And after the Sun Print process. I flipped this one when scanning so the text would be readable.



This was fun exercise that brought back memories of early grade school classes when I was learning about photography in an educational environment. Making photograms was one of the first assignments to introduce the effects of light on sensitized paper and the action of developer and fixer on that paper. It's a little sad knowing today's kids will likely never experience a chemical darkroom and think the effect I achieved was done with an Instagram filter. Oh well, c'est la vie!



# *Words and Images*

A child's tranquil play,  
The rushing sea,  
In harmony

Mike Lux



Low tide,  
The grass and the rocks can see the sky,  
Once again.

Mike Lux



Black as Moonless Sky  
Flash White, All Zones - One Through Ten  
Creativity

Michael Koren



The goldfinches like to drink from the center section of the hummingbird feeder, which is filled with water to act as an ant deterrent. As I was watching at this particular time, a hummingbird came to claim it's nectar and both birds' eyes met. I was lucky to catch the moment on "film."

Elise Shurie

Tangoing in Buenos Aires,  
An old photographer  
Thinks not about his cameras.

Mike Lux



An impending threat with blackened sky and the will to plant something anyway.

I scan the sky for a rotating supercell storm & notice the scent of rain has joined the day.

I watch the storm track and wait for squall lines to form, cumulonimbus clouds to grow, violent twists of air to tear the field apart.

I capture wall clouds on camera, chase tornadoes like I used to chase the ice cream truck.

Instability excites, the powerfulness of sudden skyjack, thunderheads with rotating updrafts and spinning vortex flow.

Lightning flashes over me and the storm completes its air show.

Lisa Ross





# FRANK LLOYD WRIGHT, OAK PARK, ILLINOIS

By David Terao

In November 2014, I toured Frank Lloyd Wright's home and studio in Oak Park, Illinois and tried to capture some of his remarkable architectural details. I then found a Frank-Lloyd-Wright quote to pair with one of the pictures that best captures his words.



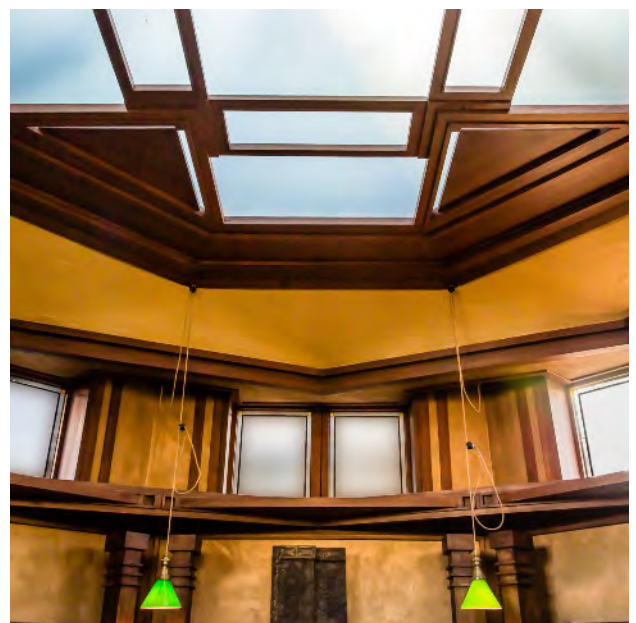
"Nature is all the body of God we mortals will ever see." The house was built around the tree limbs seen jutting inside.



"The space within becomes the reality of the building." An unusual domed hallway opens into a large living room.



"All fine architectural values are human values, else not valuable." Lots of fine detailed carvings both inside and outside.



"Form and function should be one, joined in a spiritual union." A huge skylight and high windows provide ample sunlight and retain privacy.



# PIER FRANCESCO ORSINI'S MOUTH OF HELL

## Coriolana Simon

"Only the immovable rocks, placed arbitrarily, preserved their extravagant characteristics ... I did not want...the woods at Bomarzo to be transformed into a symmetrical park of exact logic...I would leave that for the parks of other Italian princes. Mine, which would be a reflection of my own life, would also be differentiated from them all, unexpected, disquieting. ... the rocks of Bomarzo would express, solemnly and strongly, the intimate side of the bonds that united me to them and which, through them, sinking into their opaque matter and passing through it, would reach into the heart of the earth and the ancient tombs. ... Every rock had an enigma hidden in its structure, and every one of those enigmas was also a secret of my past and my character.

Week after week, the park, the Sacred Wood of Bomarzo, was taking shape in my spirit. ... Samuel Luna would have to build for me, hollowing out the rock, the hermitage that would evoke the horror of Hell and serve me as a refuge. ... [He] had drawn, following my instructions, the design of a great head with a flat nose, round eyes, arched eyebrows, and a great open mouth, a reproduction of the features that had frightened me in my mirror. ... Before climbing up the nine steps to the entrance of the Mouth of Hell...I decided to make a general

confession. ... A bronze door closed the mouth of the great mask and I shut it...A stone bench set against the wall ran about the room, round the table in its center that looked like a catafalque. They are still there. ... A single candle was flickering on the table and I set the goblet down beside it. I took off the cloak and the crown and I sat down on the bench. ... I raised the chalice slowly, as is done in rituals of consecration, and I drank it. ... Then I understood that I was going to die..."

*(Orsini's horoscope at birth did not predict a time of death, and he therefore believed himself to be immortal. The novel was composed as a memoir that Orsini wrote some four hundred years after his "death" in the Mouth of Hell.)*

Excerpted from *Bomarzo* by Manul Mujica-Lainez and translated from the Spanish by Gregory Rabassa.





# IMAGINE

By John Lennon



Imagine All The People Living For Today



You May Say That I'm A Dreamer, But I'm  
Not the Only One.  
I Hope One Day You'll Join Us and the World  
Will Be As One!!



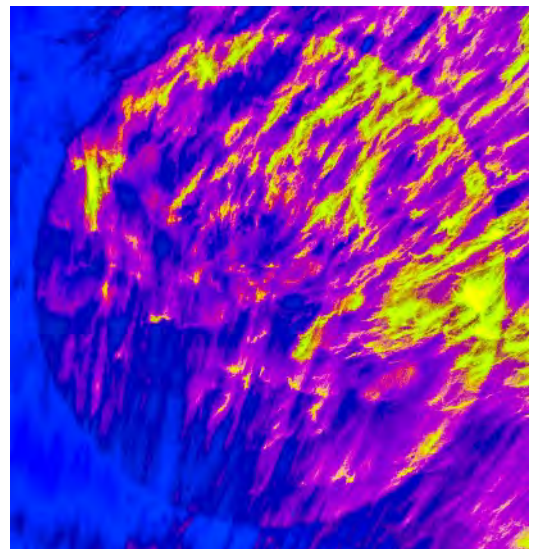
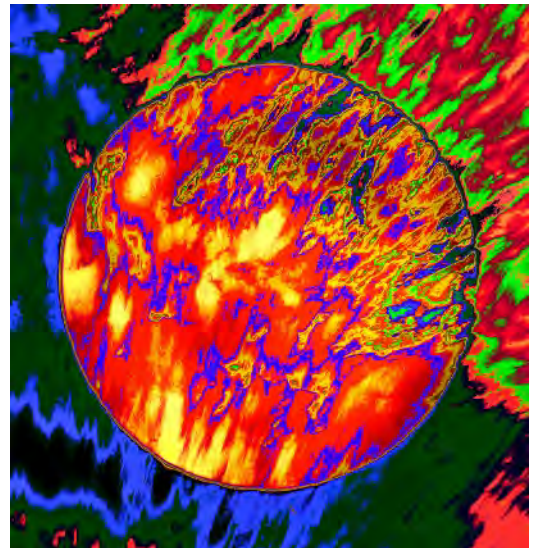
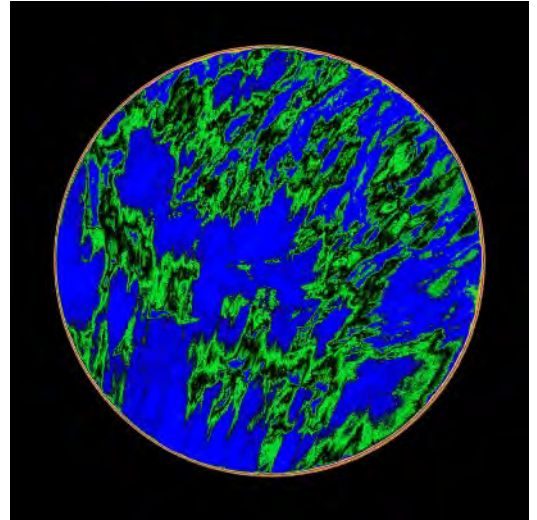
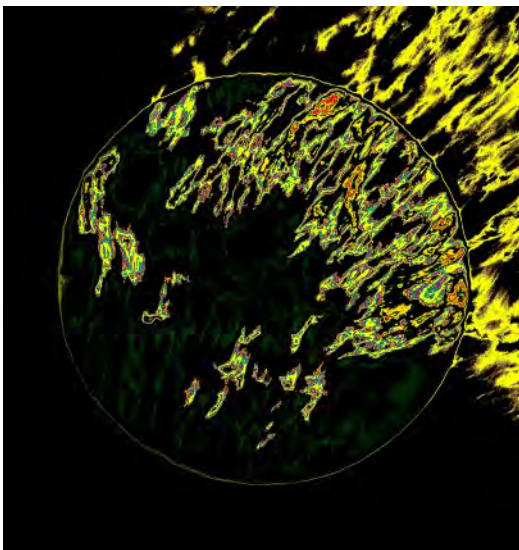
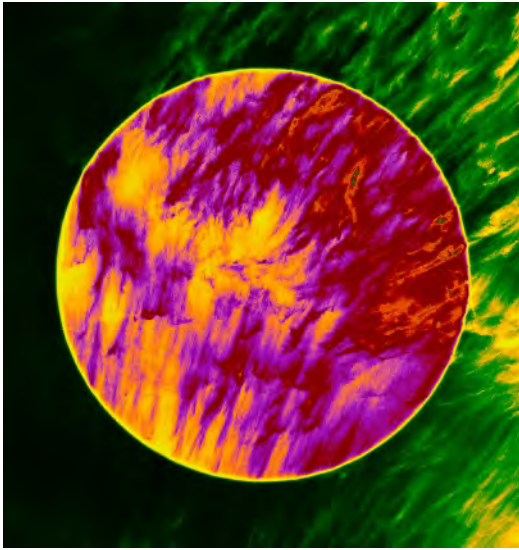
Imagine All The People Living Life In Peace

## CELESTIAL CYCLE Doug Wolters

A planet travels through space.

As with all bodies, human or celestial, an end must come. Celestial flames begin to engulf the planet. The planet is now like a torch; soon it will be no more.

Yet, from these celestial flames that engulfed the planet, a new star emerges.







HERE COMES TROUBLE

Bruce Schaefer



Keep smiling son!! Wait until your mother finds out I bought that Jaguar back there with your college fund.

Nick Williams

# DECEMBER 2014 COMPETITION WINNERS - PATTERNS

**Date:** December 11, 2014

**Topic:** Patterns

**Judge:** Iwan Bagus

## NOVICE PRINTS

1st - David Terao, Palm Leaf

## ADVANCED PRINTS

1st - Doug Wolters, Longwood Palm

2nd - Michael Koren, Pipe Dream

3rd - Nick Williams, Golden Satellite

HM - Beth Koller, San Diego Hotel

HM - Chuck Bress, Multi-Patterns

## NOVICE PROJECTED

1st - David Terao, AA Windows

2nd - Mark Paster, My Knitting

3rd - Lisa Ross, Sibelius Wave

HM - Andrew Rein, Road Closed

HM - David Terao, Under the Eiffel Tower

## ADVANCED PROJECTED

1st - Beth Koller, Organ Pipes

2nd - Charles Bowers, Escher Almost

3rd - Douglas Wolters, Grate Shadows

HM - Bob Catlett, Palouse3



*Bob Catlett, Palouse3*

*Mark Paster, My Knitting*

This was part of a knitting project I started, but never finished - scarf or blanket or ??? I had the pleasure of not only creating the image, but also creating the subject matter of the image. Details: Nikon D100, 105 mm lens, shot at *f*/22 for 2.5 seconds, on a tripod obviously.

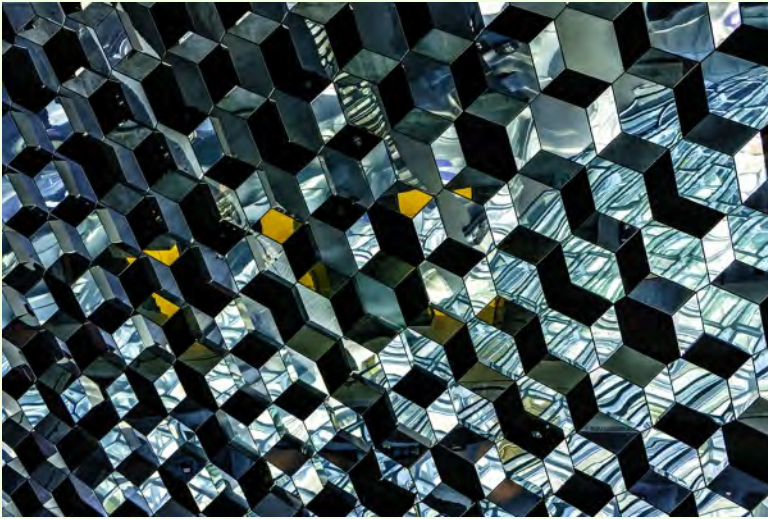


Cover: *Doug Wolters, Longwood Palm*

It's always inspiring to go to Longwood; we decided we couldn't miss their orchid show this year. As it happens, I took only one picture of an orchid - the rest, mostly of the great variety of palms in the conservatories. Shot with a Tamron 180mm macro lens on a Canon 5D Mark III, 1/8 sec. at *f*/18, ISO 200.

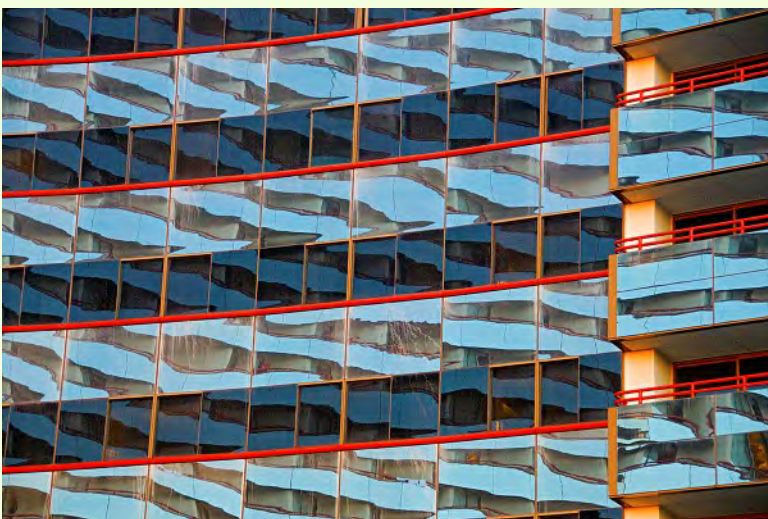


## DECEMBER 2014 COMPETITION WINNERS - PATTERNS



*Charles Bowers, Escher Almost*

*David Terao, Under the Eiffel Tower*  
Shooting straight up under the Eiffel Tower with a Canon PowerShot SD750 camera. Exposure: 1/60s, f/2.8, ISO 125.



*Beth Koller, San Diego Hotel*

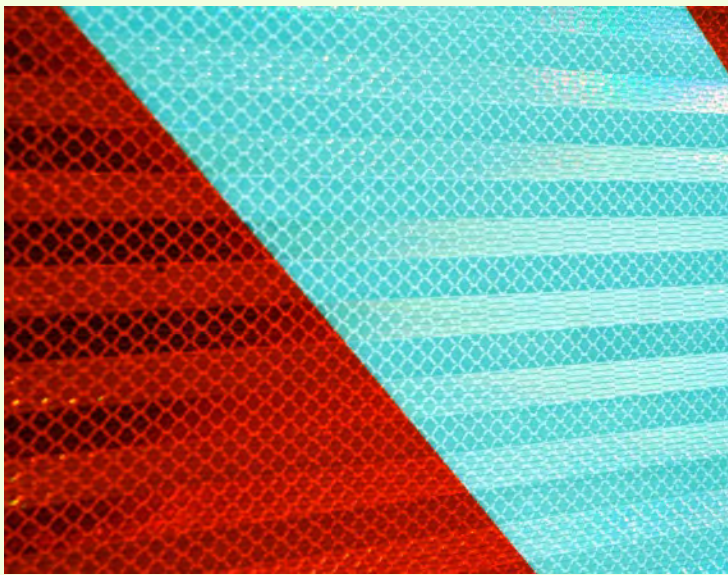
I went outside after attending a dinner meeting. The fanciful geometric forms on the adjacent building were terrific. The red balcony lines provided structure. It was dusk- so I lined up the orange columns and braced myself on a wall. P.S. The best part is that there is a Where's Waldo element. There is a man in a red shirt on one of the balconies. I never saw him until I made the larger print.



## DECEMBER 2014 COMPETITION WINNERS - PATTERNS

### *Doug Wolters, Grate Shadows*

Coco & I were on a Amish country holiday in Pennsylvania and decided to spend our last day in Lancaster. I love to take pictures of "nothing" - so, I took a picture of a grate for a storm sewer. Shot with an Olympus OM-D E-M5 with an Olympus 12-50mm lens, 50mm, 1/200s at f/8, ISO 400.

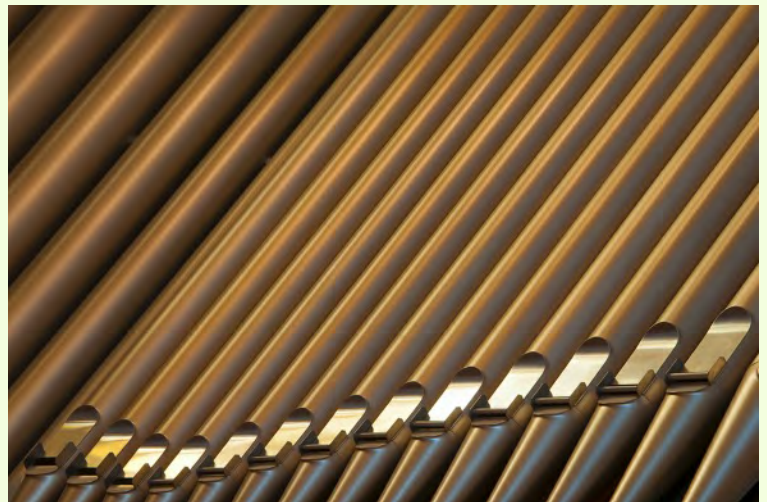


### *Andrew Rein, Road Closed*

This is a close-up of barricade in the parking lot of the Nature Visions Expo (November 2014). Taken with Sony NEX-6 and kit zoom, 82mm, 1/400s, f/14, ISO 100.

### *Beth Koller, Organ Pipes*

This was taken on a recent field trip to the Shrine of the Immaculate Conception (thanks to Beth Echols for organizing). The lines of the pipe openings were lyrical - especially on a diagonal. There was only a limited real estate for composing the picture because of other items in the foreground of the choir chamber, but there was enough.





## DECEMBER 2014 COMPETITION WINNERS - PATTERNS

### *David Terao, AA Windows*

Taken at the Dallas-Fort Worth airport. While running between terminals, I saw several American Airlines planes sitting at the gates next to each other. Fortunately, I had a small, m4/3rds Olympus E-PL5 camera and 45mm/1.8 lens with me, and I stopped to grab a quick shot. Exposure: 1/2000s, f/6.3, ISO 800. Cropped and post-processed in Lightroom 5.

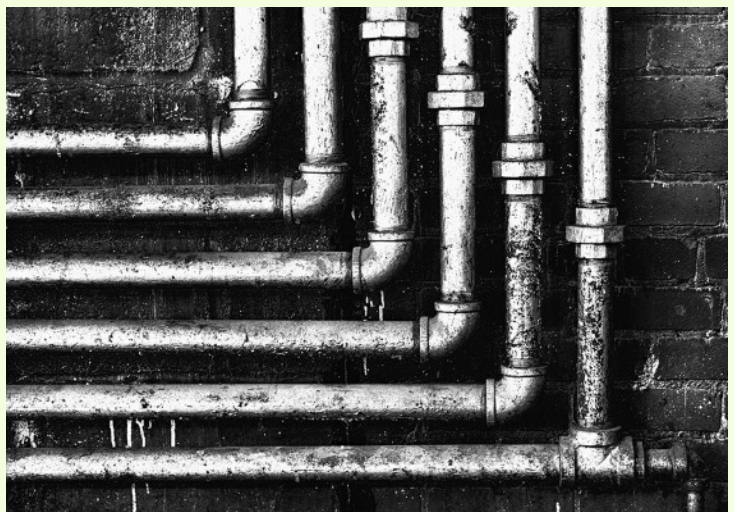


### *Lisa Ross, Sibelius Wave*

Close up detail of the Sibelius Monument in Helsinki. It consists of a series of more than 600 hollow steel pipes welded together in a wave-like pattern. Shot with a Nikon Coolpix P500.

### *Michael Koren, Pipe Dream*

This is a three shot HDR image taken at the Lanoconing Silk Mill in Western MD. I like the pattern of the concentric pipes against the wall. This scene was just a foot or so off the ground and in a very narrow aisle. The wall was on one side and large mill looms were on the other side. I had to go behind the loom, get on the ground and shoot through the supports so I could get far enough away to properly frame the picture. I used a 40mm lens at f/2.8 on a Nikon D7000. The three exposures at ISO 100 to minimize noise, were taken at 6, 3 and 13 seconds and stitched together using Nik HDR Efex Pro and converted to monochrome with Nik Silver Efex Pro.

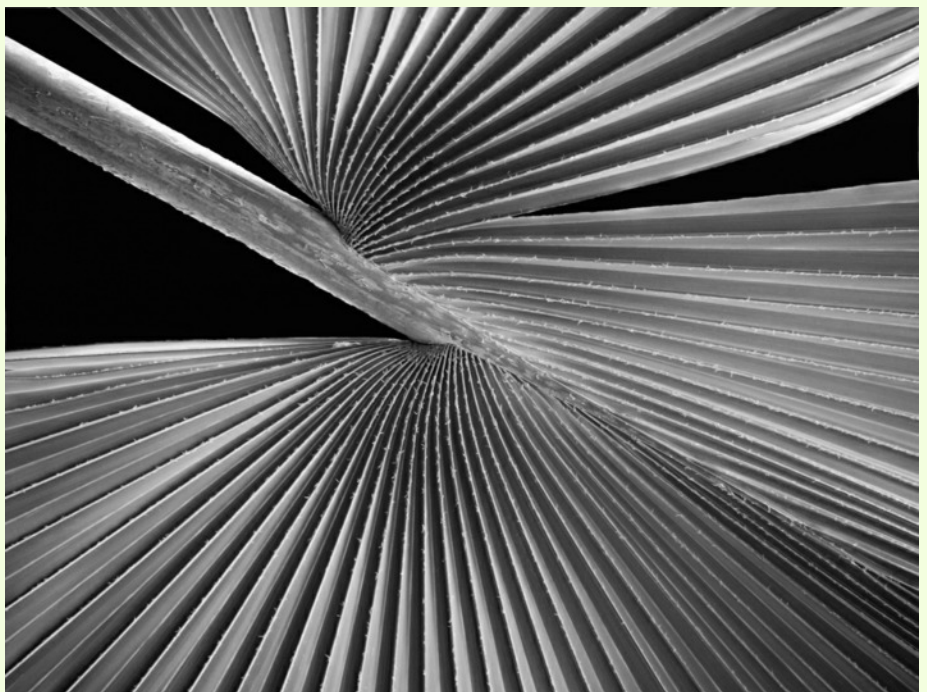


## DECEMBER 2014 COMPETITION WINNERS - PATTERNS



*Nick Williams, Golden Satellite*  
This is a photo of a satellite hanging over the space shuttle at the Udvar-Hazy Air and Space Museum.

*David Terao, Palm Leaf*  
Taken at the Rawlings Conservatory in Baltimore with a Panasonic GX7 (m4/3) camera and 45mm (90mm equivalent) Macro-Elmarit lens. 1/30s, f/4.0, ISO 800. Converted into B&W using Lightroom 5.





# CLASSES AND WORKSHOPS

DAVID BLASS

## Capital Photography Center

- Sports Photography - Georgetown Basketball vs. Marquette, Tue. Jan. 6, 5-9 p.m.
- College Sports - Wrestling at A.U. vs. Oklahoma, Wed. Jan. 8, 6-9 p.m.
- Photography Basics (3 sessions), Wed. Jan. 7, 14, 21, 7-9:30 p.m.
- Clearing of the Nave - A Special Access Safari at Washington National Cathedral, Tue. Jan. 14, 8:30-11 a.m.
- iPhone Photography, Getting Started--At the National Building Museum, Sat. Jan. 18, 11 a.m.-3 p.m.
- Fundamentals of Macro Photography (3 sessions), Jan. 29, Feb. 8, Feb. 12, 7-9:30 p.m.

And others at

<http://capitalphotographycenter.com/classes/>

## Nature & Photography Tours

- Ecuador--From the Andes to the Amazon Photography Expedition, March 20-28
- Trekking in Nepal. Rhododendrons, Orchids and Rhinos, Apr. 11-23
- Lighthouses and Harbors of Maine Photography Workshop, June 10-14
- Costa Rica, June 22-30

Custom Tours to these locations available

<http://www.naturephotographytours.com/>

## Joseph Van Os Photo Safaris

- Horses and Icons of the Wild West in Winter, Jan. 11-17
- Japan' Winter Wildlife, Feb. 12-27
- Bolivia and Chile, Mar. 7-22
- Holland at Tulip Time, Apr. 18-29
- Turkey: Continental Crossroads, May 9-24
- Orangutans of Borneo & Sumatra, June 26-July 10
- Brown Bears of Katmai National Park, July 5-10

And many others at [www.photosafaris.com](http://www.photosafaris.com)

## Art Wolfe

- Antarctica Expedition 1, Jan. 26-Feb. 4
- India, Mar. 4-15
- Morocco, Apr. 23-May 7
- Vietnam, May 21-June 1
- Namibia, July 4-23
- Oregon Coast Workshop, July 9-12
- Mt. Rainier Workshop, July 23-26

And more at <http://www.artwolfeworkshops.com/>

## Suzi Eszterhas

- Custom Photo Tours in Monterey Bay, year-round, custom dates available
- Wildlife of Brazil, July 31-Aug. 14

<http://www.suzieszterhas.com/toursWorkshops/>

## Glen Echo Photoworks

- Advanced Master Darkroom Printing (10 sessions), Tue. Jan. 13-Mar. 17, 7-11 p.m.
- Darkroom Photography: Basic & Intermediate (8 sessions), Sat. Jan. 24-Mar. 14, 10:30 a.m. -1 p.m.
- In the Style of a Master Photographer (5 sessions), Thu. Jan. 22-Feb. 26, 7:30-10 p.m.
- Photoshop or Elements Basics (4 sessions), Wed. Feb. 4-25, 9:30 a.m.-12:30 p.m.
- Portrait Portfolio - Put it Together! (4 sessions), Thu. Feb. 12-Mar. 5, 7:30-9:30 p.m.
- The Evolution of a Digital Image (2 sessions), Mon. Feb. 9 & 23, 7-10 p.m.

And more at

<http://www.ssreg.com/glenechopark/classes/classess.asp?catID=4403&pcatID=4379>

## Frank Van Riper and Judith Goodman

- The Umbria Photo Workshop - Contact Frank and Judy at [GVR@GVRphoto.com](mailto:GVR@GVRphoto.com) about the workshop
- Cucinapalooza, Apr. 18-24

<http://experienceumbria.com/tours/aprilinumbria2015>

## Nikhil Bahl

- Bosque del Apache and White Sands Workshop, (NM), Jan. 10-16
- California Coast Workshop--Big Sur and Monterey Bay, Jan. 25-30
- The Best of Southwest Florida, Apr. 5-9
- Great Smoky Mountains, Apr. 26-May 1
- Springtime at Chincoteague Island, May 15-17
- Iceland Photo Tour, May 27-June 5

And others at

[http://www.nikhilbahl.com/photography\\_workshops.html](http://www.nikhilbahl.com/photography_workshops.html)

## Washington School of Photography

- Introduction to Portable Flash (4 sessions), Wed. Jan. 7-28, 10am-1pm. Offered every month.

- Filming and Editing Video with DSLR Cameras (4 sessions), Mon. Feb. 2-23, 7-10 p.m.
- Focus on Composition (4 sessions), Mon. Jan. 5, 12 & 26, 7-10pm plus Sat. Jan. 24, 10 a.m.-1 p.m.
- Introduction to Fine Art Photography (4 sessions), Wed. Jan. 7-28, 7-10 p.m.
- Gallery Shows, Exhibits & Competitions, Mon. Mar. 2, 7-10 p.m.

And many others at

<http://washingtonartworks.com/product-category/photographyworkshops/#.U-kmFlbxbwI>

#### **Smithsonian Associates**

- Style and Momentum (6 evening sessions, 2 Saturday afternoon field trips), Tue. Jan. 20-Feb. 24, 6:30-9:30 p.m.
- The Joy of Photography (8 sessions), Tue. Jan. 20-Mar. 10, 6:30-9:30 p.m.
- Fine Printing Techniques (8sessions), Wed. Jan. 21-Mar. 11, 10:15 a.m.-3:15 p.m.
- Photographic Creativity, Design and Composition (4 sessions), Wed. Jan. 21, 6:30-9:30 p.m.
- Open Darkroom Plus (8sessions), Thu. Jan. 22-Mar12, 6:30-9:30 p.m.. Fri. and Sat. classes also.

- Introduction to Black and White Photography (8sessions), Mon. Jan. 26-Mar. 23, 6:30-9:30 p.m.

[http://smithsonianassociates.org/ticketing/tickets/search\\_photography.aspx?keyword=C-Photography](http://smithsonianassociates.org/ticketing/tickets/search_photography.aspx?keyword=C-Photography)

#### **Tony Sweet Visual Artistry Photo Workshops**

- Great Smoky Mountains Winter Shoot Out, Jan. 31-Feb. 4
- Charleston, SC, Mar. 29-Apr. 2, also Apr. 5-9
- Jersey Shore Shoot Out, May 11-15
- Iceland - through Focus on Nature in Iceland, June 18-27
- Palouse, WA, Aug. 16-20

And others, see

<http://tonysweet.com/workshops/location-workshops/>

#### **Horizon Workshops (Chesapeake City, MD)**

- Horizon Photography Summit, Feb. 27-Mar. 1
- Great Landscapes of the Southern Rockies (Utah & Arizona), Apr 26 - May 3
- Eastern Sierras & Yosemite, Jun. 7-14
- Portugal: European Jewel, Aug 9-16

<http://www.horizonworkshops.com/>

## **CALLS FOR ENTRY**

DAVID BLASS

#### **Linus Galleries (Signal Hill, CA)**

Botanicals, Deadline: Jan. 12

The Opposite Sex, Deadline: Jan. 19

Curves & Lines, Deadline: Feb. 2

The Blue Show, Deadline: Feb. 16

<http://www.linusgallery.com/call-for-entries.html>

#### **ViewBug (online)**

Leading Lines, Deadline: Jan. 21

<http://www.viewbug.com/contests/leading-lines-photo-contest>

Off the Grid, Deadline: Feb. 10

<http://www.viewbug.com/contests/off-the-grid-photo-contest>

Concrete Jungle

<http://www.viewbug.com/contests/concrete-jungle-photo-contest>

#### **Washington School of Photography**

Hang the Halls (put your photos on the wall at WSP) - ongoing

<http://washingtonartworks.com/gallery/open-call-for-the-halls/>

#### **Outdoor Photographer magazine**

Weekly assignment (contest) - ongoing

<http://www.outdoorphotographer.com/>

#### **Popular Photography magazine**

Monthly and specialty contests - ongoing

<http://www.popphoto.com/contests>

#### **Center for Fine Art Photography (Ft. Collins, CO)**

H<sub>2</sub>O, Deadline: Jan. 14

<http://www.c4fap.org/>

(Cont'd next page)



## EXHIBITS AND EVENTS

TED RINGGER

**Portraits of Planet Ocean: The Photography of Brian Skerry** - An underwater journey through different marine environments. National Museum of Natural History. Tenth Street and Constitution Ave., NW, Washington, D.C. 202-633-1000. [www.mnh.si.edu](http://www.mnh.si.edu)

**Wilderness Forever: Celebrating 50 Years of Protecting America's Wilderness** - Large format images by professional, amateur and student photographers. National Museum of Natural History. Tenth Street and Constitution Ave., NW, Washington, D.C. 202-633-1000. [www.mnh.si.edu](http://www.mnh.si.edu)

**Nature's Best 2013 Photography Awards: Windland Smith Rice International Awards** - sixty large-format images highlight the beauty, power and humor of nature. Through April 20. National Museum of Natural History. Tenth Street and Constitution Ave., NW, Washington, D.C. 202-633-1000. [www.mnh.si.edu](http://www.mnh.si.edu)

**Matthew Brady's Photographs of Union Generals** - Studio portraits by one of the most famous Civil War photographers. Through May 31. National Portrait Gallery. Eighth and F Street, NW, Washington, D.C. 202-633-8300. [www.npg.si.edu](http://www.npg.si.edu)

**Chief S. O. Alonge: Photographer to the Royal Court of Benin, Nigeria** - Images that document the rituals and pageantry of the royal court. Through September 13. National Museum of African Art. 950 Independence Avenue SW, Washington, D.C. 202-633-4600. [www.africa.si.edu](http://www.africa.si.edu)

**En Pie de Foto: Terrorism, a Crime Against Humanity** - Artists use photography and the written word to honor victims of terrorism. Through February 8. Art Museum of the Americas. 201 18th Street NW, Washington, D.C. 202-370-0147. [www.museum.oas.org](http://www.museum.oas.org)

**The Fall of the Berlin Wall - Seen from an American Perspective** - The work of San Francisco photographer Colin Campbell. Through January 15. German-American Heritage Museum. 719 Sixth Street, NW, Washington, D.C. 202-467-5000. [www.gahmusa.org](http://www.gahmusa.org)

## CALLS FOR ENTRY

(Cont'd)

### **1650 Gallery (Los Angeles, CA)**

A Winter' Tale, Deadline: Jan. 11

<http://1650gallery.com/index.php>

### **Perspective Gallery, (Chicago, IL)**

Lens 2015, Deadline: Jan. 12

<https://perspectivegallery.slideroom.com/#/Login>

### **Art-Competition.net (online)**

Flowers, Plants & Gardens, Deadline: Jan. 12

<http://www.art-competition.net/>

### **Colors of Humanity Art Gallery (online)**

Red, Deadline: Jan. 15

<http://www.art-competition.net/>

## DIGITAL PROJECTION SUBMISSIONS

The requirements for submitting images for digital projection are:

### Submission Deadline

- Midnight 1-week before competition (SSCC's Speaker meeting night)
  - Send submissions to [SSCCphotography@yahoo.com](mailto:SSCCphotography@yahoo.com)
  - Images (per member per competition): maximum of 2
- File Format: JPEG
- File Size: 500 KB (max)
- File Name: **Level ~Maker's Name~Image Title.jpg**
  - Example: Advanced~Tom Jones~Washington Landscape.jpg
  - The tilde "~" character separates the 3 sub-fields of the file name
  - **Level** - "Novice" or "Advanced" (capitalization not required)
  - **Maker's Name** - spaces allowed
  - Please use the same name throughout the year to aid record keeping.
  - **Image Title** - spaces allowed

DO NOT embed commas (,) or tilde (~) in any of the File Name sub-fields.

The "**File Name**" requirements are very important for running the competition. Please be careful when entering this information. Nonconforming filenames make it very difficult to track your entry. Use a tilde (~), NOT a dash (-) to separate the subfields (**Level~Maker's Name~Image Title**) of the filename. The Competition Chair will not make changes to the filenames after submission, so please check them carefully before submitting.

The computer and software will automatically rescale your image for projection, but if you want to exert full control over how the image is displayed, you should consider resizing and sharpening the image (maximum of 1024 pixels wide and 768 pixels high) yourself. Please see the *Member Handbook* (<http://www.scccphotography.org/wp-content/uploads/2014/08/SSCC-Member-Handbook2014.pdf>) for tutorials on how to resize images in Lightroom or Photoshop.

The maximum file size of **500KB** is to limit the demands on computer memory and speed the presentation.

The computer we use for competition night will automatically add black bars at the side of the photo based on the photo's aspect ratio. If for artistic reasons you wish your image to be presented at a size smaller than screen's full height or width, then you must size your image and position it within a 1024 pixels wide x 768 pixels high **black** background image (canvas size in Photoshop).

Questions: Doug Wolters at [SSCCcompetitions@aol.com](mailto:SSCCcompetitions@aol.com)

### PRINT IMAGE ENTRY GUIDELINES

More info on the back of prints is required starting this year. In addition to the old requirement (name, title, and an arrow indicating the top of the print), you must also include your level and the date of the competition. the template provided on the SSCC website at [http://www.scccphotography.org/wp-content/uploads/2014/08/SSCC\\_competition-label-8-14b.pdf](http://www.scccphotography.org/wp-content/uploads/2014/08/SSCC_competition-label-8-14b.pdf).



# SILVER SPRING CAMERA CLUB MEMBERSHIP APPLICATION AND RENEWAL

## ☐ RENEWAL ☐ NEW MEMBERSHIP

☐ My membership contact info remains the same (if renewal)

NAME \_\_\_\_\_

New members / updated current members:  
NAME \_\_\_\_\_

SPOUSE /PARTNER or STUDENT NAME \_\_\_\_\_

STREET \_\_\_\_\_

CITY \_\_\_\_\_

STATE \_\_\_\_\_ ZIP \_\_\_\_\_

TEL. HOME \_\_\_\_\_

MOBILE or WORK TEL. \_\_\_\_\_

EMAIL \_\_\_\_\_

☐ I am a member of other camera club(s): \_\_\_\_\_

☐ I am a member of Photographic Society of America \_\_\_\_\_

☐ I am willing to serve on a committee

☐ Field trips

☐ Competitions

☐ Membership

☐ Refreshments

☐ I am willing to lead a field trip

☐ I am interested in presenting a talk on: \_\_\_\_\_

I suggest the following club field trips: \_\_\_\_\_

I would like to have the following additional training or coaching and / or club programs: \_\_\_\_\_

## MEMBERSHIP RATES

☐ Individual: \$45

☐ Student: \$35

☐ Family: \$65

☐ Optional contribution to Commemorative Fund: \$ \_\_\_\_\_

Total: \$ \_\_\_\_\_

\*\*\*\*\*

Dues cover the club year from September through May. Dues must be paid no later than October 31 and for new members before entering any SSCC competition. After January 31, only for new members dues for the remainder of the club year are \$35; dues for spouses and students are \$30; and families are \$55. We welcome your additional contribution to the SSCC Commemorative Fund.

MAKE CHECKS PAYABLE TO:  
*Silver Spring Camera Club*

Please bring this completed form with your check before the September competition or mail to:

*Silver Spring Camera Club*

*c/o Bruce Schaefer, Treasurer*

*PO Box 2375*

*Silver Spring, MD 20915-2375*

\*\*\*\*\*

I hold SSCC and each member of SSCC, individually and collectively, blameless for any injury that may occur to me or my guests or my property while participating in any SSCC activity or event.

Applicant's signature \_\_\_\_\_

\_\_\_\_\_ Date of application

## JANUARY AT THE SSCC

- 8 Speaker Night (7:30 p.m.)
- 15 Competition Night: Open (7:30 p.m.)
- 22 Education Night (7:30 p.m.)
- 29 Open Forum (7:30 p.m.)
- 31 Field Trip - National Zoo (10:00 a.m.)

## STAY IN TOUCH WITH SSCC

[www.scccphotography.org](http://www.scccphotography.org)

[www.twitter.com/ssccphoto](http://www.twitter.com/ssccphoto)

<http://groups.google.com/group/ssccameraclub>  
[www.flickr.com/groups/sscc\\_picture\\_a\\_day](http://www.flickr.com/groups/sscc_picture_a_day)

[www.facebook.com/pages/Silver-Spring-Camera-Club/147660948590014?ref=sgm](https://www.facebook.com/pages/Silver-Spring-Camera-Club/147660948590014?ref=sgm)

[www.magcloud.com/user/plstuart](http://www.magcloud.com/user/plstuart)

Submissions for the Cable Release are due  
by the **24<sup>th</sup> of the previous month.**

PRINT COPIES OF THIS ISSUE ARE AVAILABLE  
FOR PURCHASE AT [www.magcloud.com/user/plstuart](http://www.magcloud.com/user/plstuart)



First Class Mail

Silver Spring Camera Club  
PO Box 2375  
Wheaton, MD  
20915-2375