



SILVER SPRING CAMERA CLUB • BOX 709 WOODMOOR STATION • SILVER SPRING, MARYLAND



April 1979 VOL. 17, NO. 8

# CABLE RELEASE

-jeff greenberg, editor 587-9444

SLIDE MEETING  
APRIL 5th 7:45pm  
SILVER SPRING LIBRARY  
COMPETITION: PORTRAITS

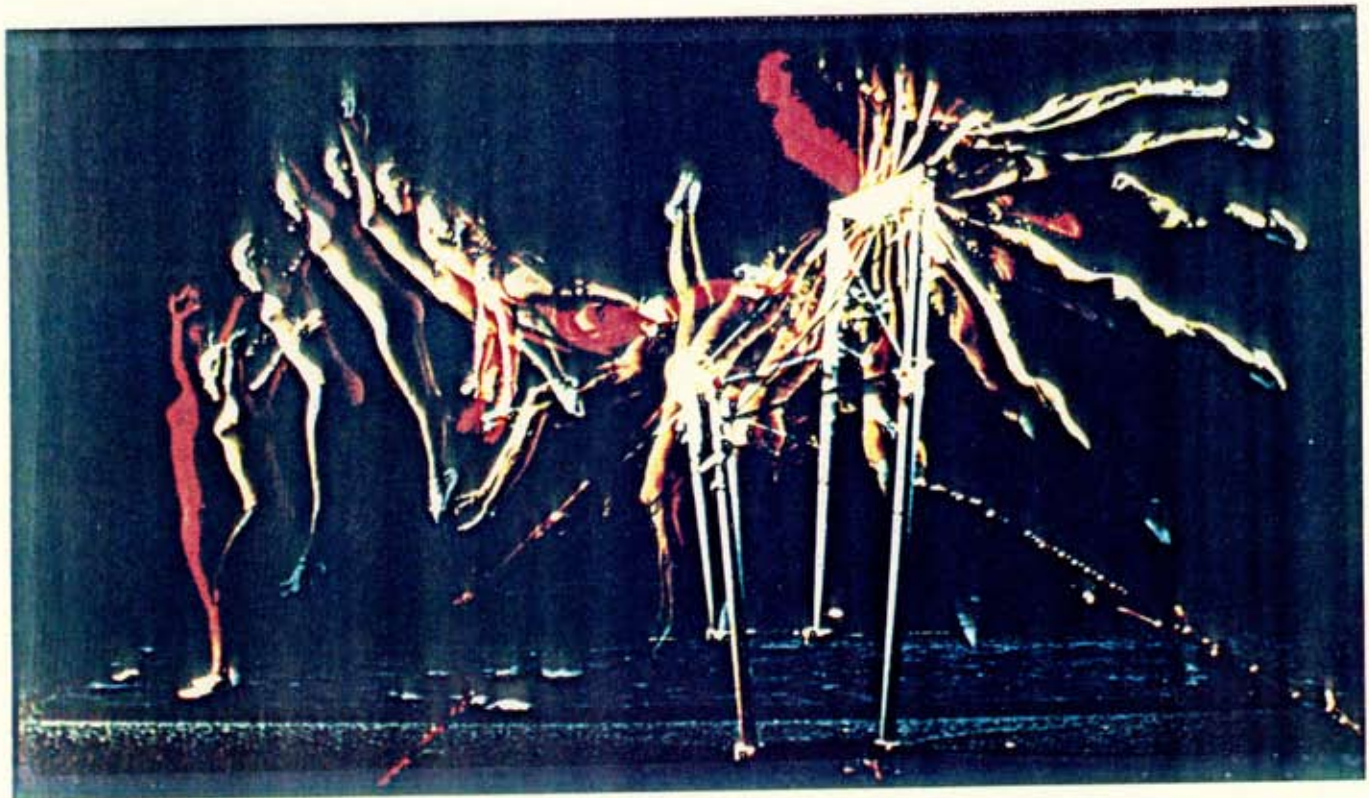
**NATIONAL GEOGRAPHIC**

PRINT MEETING  
APRIL 19th 7:30pm  
NORTHWOOD HIGH SCHOOL  
COMPETITION: PORTRAITS

*The Washington Post*

FEATURING JOE BAILEY OF NATIONAL GEOGRAPHIC  
Geographic Staff Photographer Joe Bailey will bless our slide meeting with samples of his work resulting from several years with Geographic. Joe does mostly domestic assignments, specializing in the White House and Capitol Hill. His work has appeared in all types of Geographic publications. Before Geographic, Joe produced slide shows for the U.S. Information Agency. A full house is expected tonight, visitors are welcomed.

HARRY NALTCHAYAN OF THE WASHINGTON POST SPEAKS  
Standing room only tonight as Washington Post Staff Photographer Harry Naltchayan comes to SSCC with 20 years experience at the Post. Harry's photos have captured several White House Awards through many Administration, many National Press Awards, and a Dutch Press Award. Harry also has experience as an overseas stringer. His story on the Armenian People appeared in the June 1978 National Geographic Magazine. Visitors are welcomed.



XEROX OF SLIDE BY JOE BAILEY OF NATIONAL GEOGRAPHIC

AFFILIATED WITH  
PHOTOGRAPHIC SOCIETY OF AMERICA  
GREATER WASHINGTON COUNCIL OF CAMERA CLUBS  
ALL-MARYLAND COUNCIL OF CAMERA CLUBS  
MONTGOMERY COUNTY ARTS COUNCIL

1979 CLUB COMPETITION SUBJECTS

<u>month</u>	<u>slides</u>	<u>monochrome</u>	<u>color prints</u>
April	portraits	portraits	open
May	open	open	open





**PRESIDENTS MESSAGE**

Special thanks this month to Anne Lewis and the other members of the nominating committee for their hard work which has resulted in a full slate of club officers and chairpersons for next season - the earliest full slate in recent memory - what a fantastic start! I know all members join with me in thanking you for your hard work.

-Guy Cunningham, President



**TIME EXPOSURE BY HAROLD BROWNING**

... a reminder of coming events to help you plan your participation. Details regarding these events are covered elsewhere in this issue and future issues of the Cable Release.

- 4/5/79: club slide meeting, subj. portraits, S.S. library 7:45pm
- 4/8/79: deadline for GWCCC competition
- 4/12/79: tentative Executive Board Meeting at Guy Cunninghams 7:45pm
- 4/19/79: club print meeting, b&w subj. portraits, color subj. open. Northwood H.S. 7:30pm
- 4/21/79: club field trip on subway, meet at Silver Spring library 8am
- 4/21/79: GWCCC Annual Club Competition at 1st Presbyterian Church, Arlington, Virginia 9am
- 5/3/79: club slide meeting subj. open S.S. library 7:45pm
- 5/17/79: club print meeting, b&w and color subj. open, Northwood H.S. 7:30pm
- 5/17/79: deadline for SSCC Year-End Compet.
- 5/20/79: Year-End Competition judging at home of Ann Lewis
- 6/7/79: SSCC Annual Banquet and award at Washingtonian 6:30pm

**INTERNATIONAL CONVENTION**

October 2-6

**PSA - THE NEW ENGLAND WAY**

An international convention will take place October 2nd thru 6th at the Hartford, Conn. Civic Center. This is going to be the best exhibition showing yet, only 12x12 screens are hoped to be used. PSA hopes to see you in Hartford. Call me for more information...

-Emerson Gray, PSA Area Representative



**ANNUAL BANQUET AND YEAR-END COMPETITION**

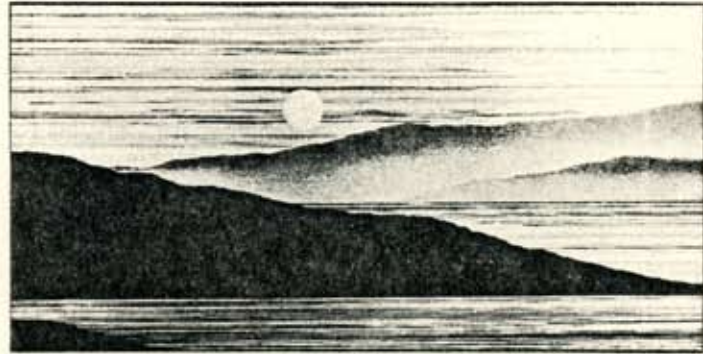
The end of our club year is fast approaching so lets end it with a bang by participating in the Year-End Competition and Annual Banquet which is scheduled for Thursday, June 7th at the Washingtonian, Shady Grove, just off I-270. Cash bar available at 7pm and buffet at 8pm - all you can eat - also plenty of parking. Total cost per person is \$10.15 (includes tax and gratuities). The Year-End Competition allows you to submit up to 5 entries in any or all categories. Your entries must have been entered in SSCC, GWCCC and/or All-MdCCC during this club year. Additional details are in the SSCC Rules for Competitions and Awards. If you have any questions please call me... 384-4938.

-Anne Lewis, Vice-President

**SSCC BANQUET RESERVATION**

NAME: \_\_\_\_\_

Enclosed is \$ \_\_\_\_\_ for person(s) at \$10.15 each to attend the SSCC Annual Banquet June 7th, Thursday, 7pm at the Washingtonian at Shady Grove. Make checks payable to Silver Spring Camera Club and give or send to Sylvia Perry, 11602 Ga. Ave., S.S. ZIP 20902.



**SSCC YEAR-END COMPETITION**

As the proverbial seagull flies off into the proverbial sunset and another SSCC year draws to a close, the Year-End Competition suddenly comes into focus. So now is the time to tense up with eager anticipation for this final chance to pit your pics against fellow members. Dont be taken in by these excuses:

1. Its free and there may be a catch.
2. I cant decide what to enter.
3. I forgot to enter.
4. Im a new member and Im not ready for it.
5. Im an old member and Ive done it all before
6. I dont have the energy to enter.

Remember that very impressive trophies and special ribbons will be awarded to winners of the Year-End Competition. DO ENTER the Year-End Competition and DO ENTER the GWCCC and All-Md. competitions next year.

-Mike Stein, Director



## SSCC COLOR SLIDE MARCH RESULTS

### Advanced

1st	Thelma Gray	"Tropical Flowers"
2nd	Ann Lewis	"Candlestick & Matches"
3rd	Fred Nathanson	"Low Flyer"
HM	Bill Ayers	"Lone Gull"
HM	Bill Ayers	"Lake Evans"
HM	Glenn Dalby	"Egg & Yellow"
HM	Ann Lewis	"Octoberfest"
HM	Thelma Gray	"Butterfly on Marigold"

### Novice

1st	James Harris	"Skipjacks"
2nd	Jim Locke	"At the Beach"
3rd	Phil Henderson	"Portrait"
HM	Betty Collins	"Rainbow"
HM	Gerald Collins	"Beach Girl"
HM	Richard Slade	"Rippling Masts"
HM	Richard Slade	"A Capital View"
HM	Curtis Knisely	"White on Red"
HM	Low Lewis	"Chesapeake Bay"



## GWCCC CLUB COMPETITION

Entries for the competition must be turned in to me at the April 5th SSCC meeting or at my home by April 8th. The categories are:

1. Novice Pictorial Slides
2. Advanced Pictorial Slides
3. Nature Slides
4. Novice Monochrome Prints
5. Intermediate Monochrome Prints
6. Advanced Monochrome Prints
7. Monochrome Nature Prints
8. Color Prints
9. Color Nature Prints



The club may enter up to 20 in each category but no more than 4 from any individual. I urge you to enter so that the club will look good because if we don't enter we won't win. Individuals who win will receive awards also. If you have any questions or need more information, call me . . . 593-5242.

-Skip Waters, GWCCC Represent.

## SSCC MONOCHROME & COLOR PRINT MARCH RESULTS

### Advanced Monochrome

1st	Mike Stein	"No View Within"
2nd	Ariel Kerem	"Great Falls"
3rd	Mike Stein	"Horseman"
HM	Garry Kreizman	"Zinnia Yummy"
HM	Garry Kreizman	"Snow Impala"



## ALL-MARYLAND CCC MARCH RESULTS

### Advanced Slides

2nd	Mike Stein	"Keswick, England"
HM	Bill Ayers	"Sundown"
HM	Len Tuchin	"Fantasy Flight #1"
HM	L. Schuetzler	"Covered Bridge Window"
HM	R. Schuetzler	"Cloudland Farm"
HM	R. Schuetzler	"Out Over the Bay"



### Intermediate Monochrome

1st	Arnold Cherdak	"Virginia Horse Farm"
2nd	Adele Miller	"Brown Forest"
3rd	Arnold Cherdak	"White Water"
HM	Berryl Longway	"Sunrise & Fishermen"
HM	Sheldon Levin	"Twigs"

### Novice Monochrome

1st	Carolyn Little	"Critique"
2nd	Diane Proctor	"Lara"
3rd	Dick Slade	"Vertogo"
HM	Aaron Rosenthal	"Roosevelt Island View"
HM	Diane Proctor	"Aripeka"



### Novice Slides

HM	Dick Slade	"Snap, Crackle, and Pop"
HM	Dick Slade	"Total Loss"
HM	Dick Slade	"St. Louis Silver"

### Color

1st	Bernie Blass	"Hollyhocks"
2nd	Art Benjamin	"Tidepool"
3rd	Sylvia Perry	"Clay Pots"
HM	Emerson Gray	"Farm Scene"
HM	Sylvia Perry	"Ambato Rose"
HM	Art Benjamin	"Proud Peacock"



### Unlimited Monochrome Prints

HM	Chris Heil	"Driftwood"
HM	R. Schuetzler	"Weir Fisherman"
HM	Mike Stein	"East Wing Nat. Gallery"
HM	Emerson Gray	"Crossed Arms"

### Advanced Monochrome Prints

HM	Anne Lewis	"Swan"
HM	Carolyn Little	"Lift-Off"



### Novice Monochrome Prints

HM	Clara Splitter	"Flower & Plate"
----	----------------	------------------

### MOVING ON UP

Both Don Hoatson and Arnold Cherdak have now entered the realms of Advanced Monochrome! Congratulations to both of you.

### Unlimited Color Prints

1st	Bob Pugatsky	"What a Way to Live"
3rd	Art Benjamin	"Pemaquid Light"
HM	Art Benjamin	"At Twilight"
HM	L. Schuetzler	"A Break in the Weather"

### Novice Color Prints

HM	R. Schuetzler	"Skipjack Mast"
HM	Len Tuchin	"Spider Captures Fly"
HM	Sylvia Perry	"Ambato Rose"





## PUBLIC ENDEAVOURS OF SSCC MEMBERS

Joe Davis and Anne Lewis continue to record photographic history of upper Montgomery County, Md. for Sugar Loaf Trails, a non-profit Society which is now concentrating on rural black communities and their unique history, so different from the Montgomery County most of us know. Some of Anne's copy work appeared in the Washington Post recently.

An exhibit of about 40 monochrome and color prints by Emerson and Thelma Gray continues to hang at the Sisson Gallery of Photographic Art, 310 S. Pickett, Alexandria, Virginia.

The spring issue of Artscapes, a Montgomery County Arts Council publication, contains pictures taken by Mike Stein, Eliot Feldman, and Thelma Gray.



## SSCC MEMBERS RECEIVE RECOGNITION

Dick Slade has won an award for a travelogue he produced called "Rails West" which is a ½ hour film about Amtrak in the Los Angeles area and it has been shown over 80 times so far on different T.V. stations around the United States.

Jeff Greenberg will have a front cover picture on the July or August issue of Washington Calendar Magazine of a mail box surrounded by violet flowers.

## PHOTO MAGAZINE DISCOUNTS

The following is an updated price list of subscription rates to some well known photo magazines. Mail your check to: Phil Diamond Cameras, Box 15435 San Diego, CA. 92115

	1 Year	2 Years	3 Yrs
Petersens Photographic	6.60	11.40	13.50
Popular Photography	6.00	11.95	17.50
Modern Photography	6.00	11.00	16.50
Camera 35	7.50	13.50	-----

-Fred Nathanson, Purchasing

## ITEM OF INTEREST SUBMITTED BY GEORGE WINNETT

I imagine that many of our "oldtimers" are asked by people just getting started or thinking about getting started in photograph questions about what kind of a camera to buy. Usually I tell them a SLR that will take interchangeable lenses. But here is an article that gets into more specifics and it may be helpful to our members when they are asked the question: (Wash. Post Weekend 3/2)

## When an Old Camera Dies

BY D.J. HERDA

It's time for "Taps." The photos you took with your trusty Instamatic on your last vacation just came back from processing, and one out of 10 ain't good. So you wrap it in old newspapers and bury it.

Of the camera your father brought back with him from the war just clicked its last. It will make an interesting mantelpiece.

And now the panic: What will you buy to replace it? No matter what you get, there are some very real pitfalls — buying a "dog"; buying a camera you'll outgrow in a year or one you'll still be struggling to learn to use in a year; and paying twice what your neighbor paid two weeks ago. Selecting the "right" camera for you is about as easy as choosing a life-long compatible mate. Here are a few of the different types of cameras commonly available.

**CARTRIDGE:** Usually taking 110-size film, these are quick-loading minis, many of which need few or no settings. They're okay for occasional snapshooters, though the images are rarely sharp and can't be enlarged effectively to more than 5" x 7".

**35-mm RANGEFINDERS:** These are lightweight, compact models producing sharp images that may be enlarged easily to 11" x 14" or more. Many easy-to-use automatic RFs are on the market. Except for a few (expensive!) exceptions, RFs don't take interchangeable lenses.

**INSTANT-PRINT:** These are easy-to-operate cameras that produce prints that develop fully within minutes. Film comes in either black-and-

white or color print (Kodak has only color print) and is relatively expensive. Prints may be duplicated, but generally only by sending the original to Kodak or Polaroid, the two makers of instant-print cameras.

**ROLL, PRESS & VIEW:** These are generally expensive, limited-use cameras mostly for professionals.

**35-mm SINGLE-LENS REFLEX:** Most popular throughout the world, SLRs use inexpensive and versatile 35-mm film and accept interchangeable lenses. There are many automatic models for easy operation. They feature an expandable system of accessories and a wide price range.

If you haven't guessed by now, I'm suggesting that you consider an SLR. Suppose you're game, but wouldn't know an SLR from a BVD. What do you do? Funny you should ask.

**No. 1.** An SLR is built with a pentaprism (five-part prism) and a mirror, to let you view directly through the lens. That means that what you see is what you get on film. That also means that SLRs are easy to spot in a crowd. Pentaprisms aren't exactly micro-chips — they take up room. That large, generally pyramidal protuberance on the top of the camera is the telltale sign of an SLR.

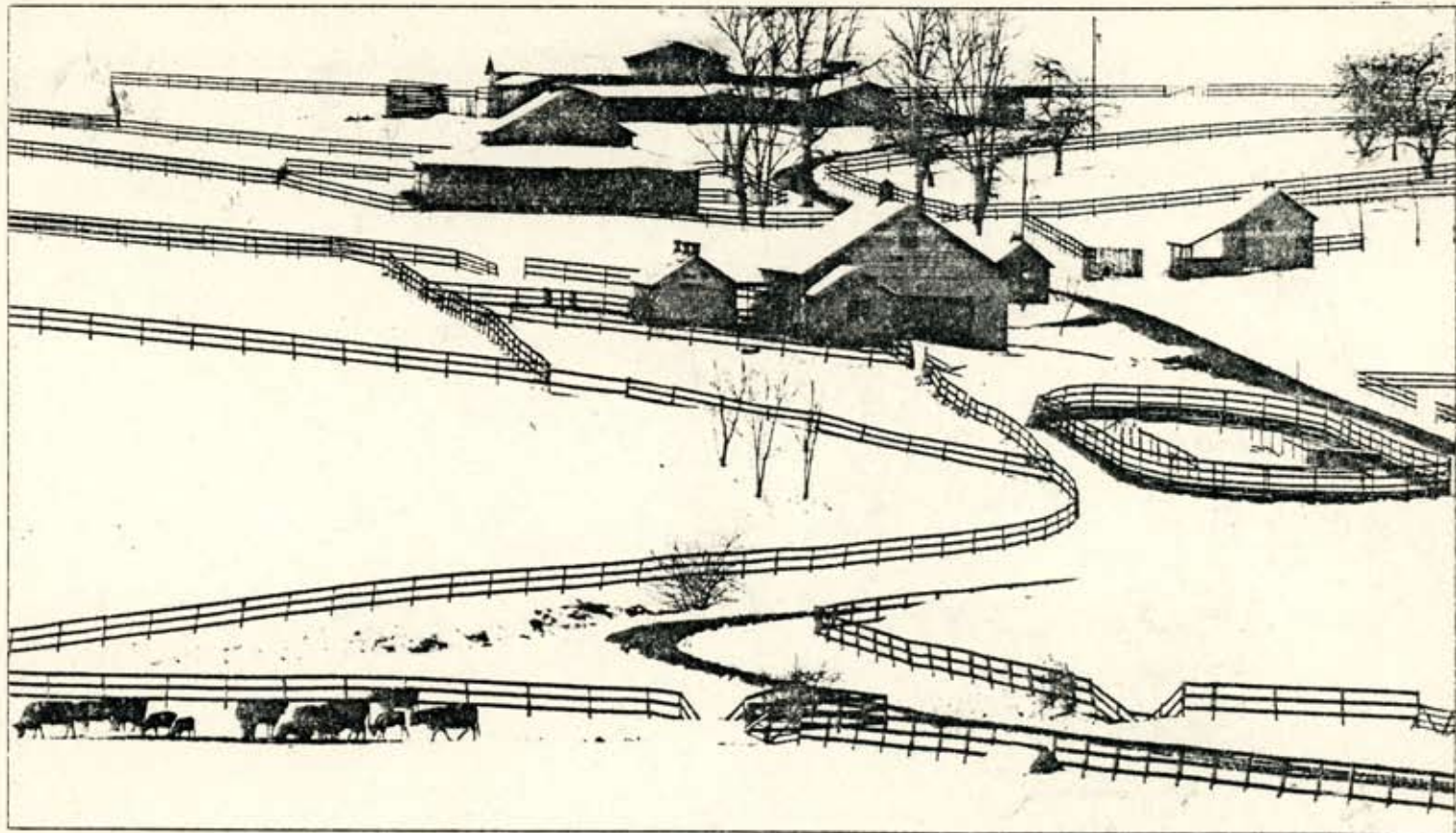
**No. 2.** No camera salesman earns a living by talking about selling cameras. Don't plunk down your hard-earned money without talking to at least three or four different salesmen.

**No. 3.** To make an intelligent choice of one SLR from the nearly 150 different models being manufactured now, read up. Both Consumer Guide and Consumer Reports regularly publish reviews of different SLRs, as do the popular photo magazines. So learn what to look for in an SLR.

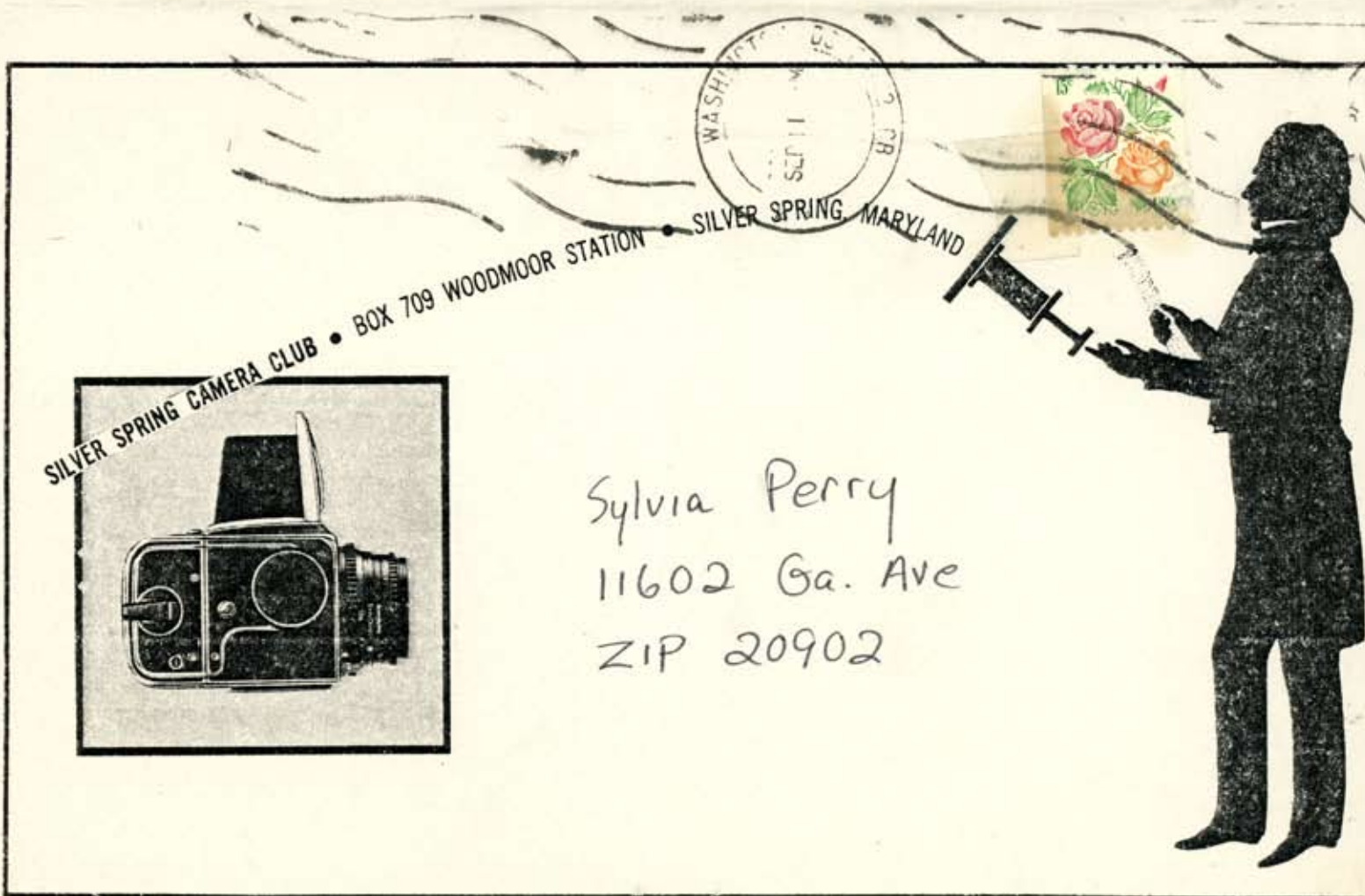
© 1979, Inter-Continental Press Syndicate.







"Winter Pastoral" by Washington Post Staff Photographer Harry Naltchayan, received the first place award for Pictorial Photos in the 1976 White House News Photographers' Association Contest.



SILVER SPRING CAMERA CLUB • BOX 709 WOODMOOR STATION • SILVER SPRING, MARYLAND



Sylvia Perry  
11602 Ga. Ave  
ZIP 20902





SILVER SPRING CAMERA CLUB • BOX 709 WOODMOOR STATION • SILVER SPRING, MARYLAND

April 1979



# FABLE RELEASE

## SLIDE MEETING

APRIL 3 7:45am  
SILVER SPRING LIBRARY  
COMPETITION: OPEN

## PRINT MEETING

APRIL 17 7:30am  
NORTHWOOD HIGH SCHOOL  
COMPETITION: OPEN

### MATT FINISH, FAMOUS SHUTTERBUG

Matt Finish, who is well known for his famous photos of weeds, will honor the Silver Spring Camera Club with his presence this week. His slide show and talk will show us the secrets of adding dust to your slides for facinating special effects. His background is filled with honors, including publication in such nationally known and highly respected magazines as, The DDT Journal, The Pest Control Post and The Exterminator. Recently he won world-wide acclaim for his illustrations for the article: Raising Crabgrass for Fun and Profit. Also, he has promised us an exciting surprise ending to our April 3rd meeting, so everyone be sure and come and don't miss Matt's finish! Visitors will be eaten.

### ANSEL ATOMS COMES TO SILVER SPRING!

This week we are pleased to welcome Ansel Atoms to the SSCC. Atoms, who is famous for his color abstracts and montages will give a showing of his works and will discuss his well known Zone System, which was brought into the public eye a few years back by Mr. Rod Serling. Atoms is known around the world and his works have appeared in such prestigious galleries as Joe's Back Alley Gallery and Shoe Repair, Don's Discount Art Center and The Instamatic Underground. So be sure not to miss this inspirational evening. See you there! Visitors will be humiliated.

Editor: Carolyn Write

Co-Editor: Steven Shorts

Any news items submitted for publication should be totally illegible. All suggestions, criticisms and comments should be kept to yourself. Some people really have no manners.

### PRESIDENT'S MESSAGE

There will be an Executive Bored Meeting Wednesday, April 16, 1890, 7:30 am, at Anne Igma's home 12914 Allergy Lane, Silver Spring, Md.

Members who are bored and Chairpeople of the committees are asked to attend and other members of the club are also welcome.

All those planning to attend should call Anne at 737-8855 so she will know how much punch and cookies to prepare.

Skip Stones

AFFILIATED WITH

PHOTOGRAPHIC SOCIETY OF AMERICA  
GREATER WASHINGTON COUNCIL OF CAMERA CLUBS  
ALL-MARYLAND COUNCIL OF CAMERA CLUBS  
ANSEL ADAMS MODERN ART SOCIETY